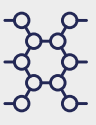


## Hazardous Chemical usage and the link to wastewater emissions:

Mounting research reveals the far-reaching impact of the fashion and textile industry across air, land and sea ecosystems.



**+8,000 chemicals** are being used in the fashion and textile industry



**Roughly 20% of global wastewater** is produced by the fashion industry



**1kg = 20,000 litres** of water produce one kilogram of cotton



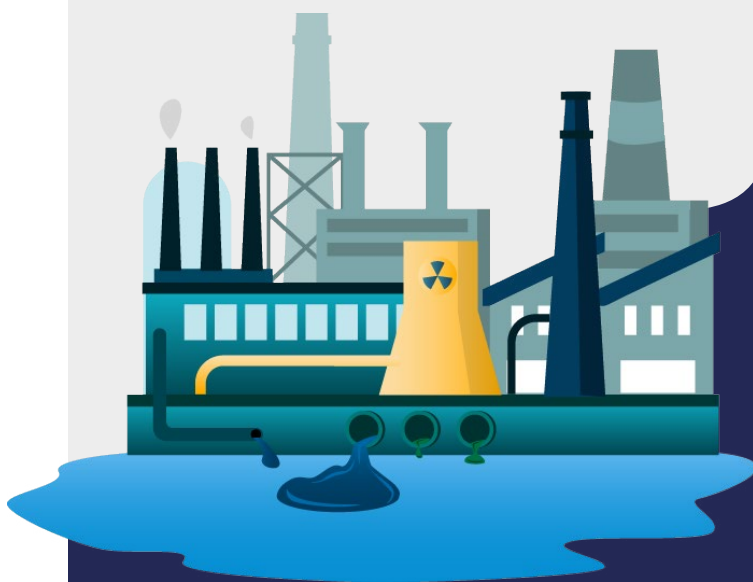
Textile dyeing is the **2nd largest polluter** of water globally



**5,000 gallons of water = A single** T-shirt and a pair of jeans



**Only 11% of companies** are showing an awareness of water pollution across their whole value chain (CDP, 2020)



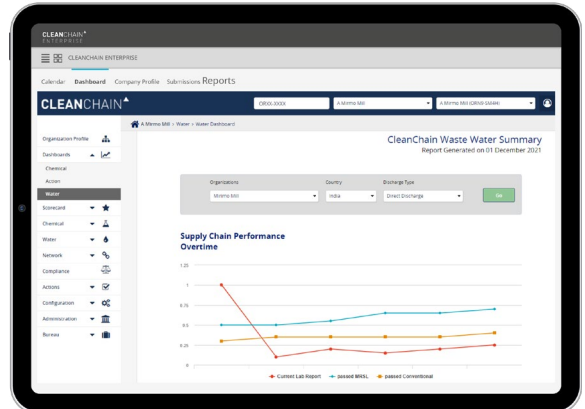
This low awareness is echoed within the CleanChain data as we see low levels of wastewater emissions data consistently being uploaded and common chemical alerts raised from wastewater data submitted over the 2021 period, including:

- 1 NONYLPHENOL ETHOXYLATES (NPEO)
- 2 PFOA
- 3 4-CHLOROANILINE
- 4 NONYLPHENOL (NP), MIXED ISOMERS
- 5 MONO-, DI- AND TRI-METHYL TIN DERIVATIVES
- 6 DI(ETHYLHEXYL) PHTHALATE (DEHP)
- 7 PFHXA
- 8 METHYLENE CHLORIDE
- 9 TETRACHLOROETHYLENE
- 10 4,4'-METHYLENEDIANILINE



Many of these chemicals can be harmful to aquatic and human life, so tracking and reporting on your wastewater emissions throughout your value chain is critical to the successful transition of the industry towards a more sustainable business model.

The CleanChain wastewater module facilitates the gathering and tracking of wastewater emissions data for the apparel industry. Brands gain the ability to demonstrate performance across their entire value chain, 3rd party standards and regulations while also providing facilities with seamless access to upload the required data and demonstrate conformance.



### KEY FEATURES

- ▲ Upload and connect to lab results. Track changes to different dimensions over time
- ▲ Monitor conventional wastewater parameters against multiple standards and sites
- ▲ Benchmark against the wastewater standards library, brand-specific and national standards
- ▲ Link to wastewater management plans, corrective actions and relevant regulatory changes
- ▲ View performance in dashboards and share downloadable reports

To monitor the progress of your value chain's sustainability commitments learn more about CleanChain.

[Learn more](#)