

INTRODUCING THE CLEANCHAIN ACTION MODULE

With multiple suppliers in your supply chain, promoting best practices and tracking progress manually takes time and leaves your records open to errors. CleanChain™, an ADEC Innovation, supports you as you encourage suppliers to improve their processes and create safer, more compliant business practices.

Efficiently create and manage your corrective action plan (CAP) with CleanChain's Action Module. Build your own questions, score assessments, track progress, and follow up with corrective actions—all in one application.

KEY FEATURES

CUSTOM CONFIGURATION

Build your assessment from the ground up without the need of coders and developers. The **CleanChain Assessment Builder** gives you all the tools you need to create, distribute, and automate your assessment.

PROMOTE IMPROVEMENT

Eliminate hours of version tracking, email sending, and human error, and spend more time identifying ways to improve performance with **Corrective Action Plans**. Report on progress and send automated corrective action emails in an organized workflow that will remove much of the burden of corrective action planning.

ADEC SUPPLY CHAIN MANAGEMENT TECHNOLOGY

Supply chains are complex and dynamic. **ADEC Supply Chain Management Technology** allows for the free flow of information between supply chain partners and customers, and creates data rich supply chain reports without sacrificing confidentiality or complexity.

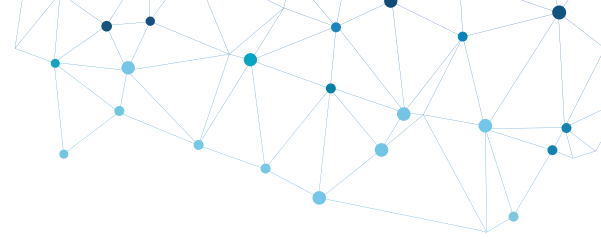
AGGREGATE

Piecing together supply chain reports is a tough, often intensive task. Drill down into the details or give high-level executive reports with Assessment Reports.

The CleanChain Action Module supports you as you strengthen relationships with suppliers and build a robust, action-oriented supply chain network.



To learn more, visit cleanchain.com or contact us at cleanchaininfo@adec-innovations.com.



Supplier and Site Overview

Flag issues

Report for: Supplier | Flag: | CAP: 0 | Last Updated on: | Last Updated by:

High: 95 - 100% | Average: 85 - 94% | Poor: 70 - 84% | Critical: 0 - 69%

98% SCORE
9974 out of 10200 possible

98% PART A - GENERAL OPERATIONS | 100% PART B - COMPLIANCE | 94% PART C - CHEMICAL | 8% PART D - SOURCING

Customize scoring

Score and rank responses from individual sites with drilldown dashboard

Track progress and improvement

Supplier	96%	100%	64%	45%	1515 / 1700	89%
Supplier - 01	99%	100%	100%	0%	1696 / 1700	100%
Supplier - 02	97%	100%	100%	0%	1684 / 1700	99%
Supplier - 03	98%	100%	100%	0%	1689 / 1700	99%
Supplier - 04	99%	100%	100%	0%	1696 / 1700	100%

Requirement	Response	Documented	Weighted Score	Awarded Points	Flag	Previous	Current
Part 1: General Operations			500	480		0%	96%
1.0 Assessment			100	80		0%	80%
1.1.0 Today's Date	28-Sep-2017			0			
1.2.0 Human Resources	50			50			
1.3.0 Marketing	87.2			87.2			
1.4.0 Product	93.9			93.9			
1.5.0 Customer Support	91.70			91.70			
2.0 Management		200		200		0%	100%

Manage your CAP workflow

Track CAP progress with notes, comments, and attachments

CAP (1)

CREATE > **IN PROGRESS** > REVIEW > CLOSE

ID: 30

CAP Name: Missing Documentation | Reason: Request Information Corrective Action

Previous notes:

OBSERVATION
Employees on site with no contract.

ACTION
Place employees under written contract.

ID: 30 | Status: In Progress | Added by: rbaadmin on 08-Apr-2019

View History

Notes

SUBMIT FOR REVIEW